

MINOR LAND DIVISION SURVEY

A PORTION OF THE SOUTHWEST QUARTER OF SECTION 25, TOWNSHIP 1 NORTH, RANGE 6 WEST, OF THE GILA AND SALT RIVER BASE AND MERIDIAN, MARICOPA COUNTY, ARIZONA.

LEGAL DESCRIPTION:

PARENT PARCEL: PER WARRANTY DEED NO. 2020-0466382, MCR.

THE SOUTH HALF OF THE SOUTHWEST QUARTER OF THE SOUTHWEST QUARTER OF SECTION 25, TOWNSHIP 1 NORTH, RANGE 6 WEST OF THE GILA AND SALT RIVER BASE AND MERIDIAN, MARICOPA COUNTY, ARIZONA.

LOT 1: BEGINNING AT THE SOUTHWEST CORNER OF SECTION 25, TOWNSHIP 1 NORTH, RANGE 6 WEST OF THE GILA AND SALT RIVER BASE AND MERIDIAN, MARICOPA COUNTY, ARIZONA, SAID CORNER BEING MARKED WITH A MARICOPA COUNTY ALUMINUM CAP, FROM WHICH, THE WEST QUARTER CORNER OF SAID SECTION 25 BEING MARKED WITH A 1 INCH DIAMETER IRON BAR BEARS NORTH 0 DEGREES 35 MINUTES 38 SECONDS EAST A DISTANCE OF 1319.28 FEET, THENCE NORTH 0 DEGREES 35 MINUTES 38 SECONDS EAST ALONG SAID LINE A DISTANCE OF 164.91 FEET, THENCE SOUTH 89 DEGREES 19 MINUTES 44 SECONDS EAST A DISTANCE OF 264.15 FEET, THENCE SOUTH 0 DEGREES 35 MINUTES 38 SECONDS WEST A DISTANCE OF 164.96 FEET TO A POINT ON THE SOUTH LINE OF THE SOUTHWEST QUARTER OF SAID SECTION 25, THENCE ALONG SAID SECTION LINE NORTH 89 DEGREES 19 MINUTES 5 SECONDS WEST A DISTANCE OF 264.15 FEET TO THE POINT OF BEGINNING, TOGETHER WITH AN EASEMENT FOR INGRESS, EGRESS AND PUBLIC UTILITIES OVER THE WEST AND SOUTH 33 FEET THEREOF, AND ALSO AN EASEMENT FOR INGRESS, EGRESS AND PUBLIC UTILITIES OVER THE NORTH 10 FEET THEREOF.

LOT 2: COMMENCING AT THE SOUTHWEST CORNER OF SECTION 25, TOWNSHIP 1 NORTH, RANGE 6 WEST OF THE GILA AND SALT RIVER BASE AND MERIDIAN, MARICOPA COUNTY, ARIZONA, SAID CORNER BEING MARKED WITH A MARICOPA COUNTY ALUMINUM CAP, FROM WHICH, THE WEST QUARTER CORNER OF SAID SECTION 25 BEING MARKED WITH A 1 INCH DIAMETER IRON BAR BEARS NORTH 0 DEGREES 35 MINUTES 38 SECONDS EAST A DISTANCE OF 1319.28 FEET, THENCE NORTH 0 DEGREES 35 MINUTES 38 SECONDS EAST ALONG SAID LINE A DISTANCE OF 164.91 FEET, TO THE POINT OF BEGINNING, THENCE CONTINUING NORTH 0 DEGREES 35 MINUTES 38 SECONDS EAST A DISTANCE OF 164.91 FEET THENCE SOUTH 89 DEGREES 20 MINUTES 23 SECONDS EAST A DISTANCE OF 264.15 FEET, THENCE SOUTH 0 DEGREES 35 MINUTES 38 SECONDS WEST A DISTANCE OF 164.96 FEET THENCE NORTH 89 DEGREES 19 MINUTES 44 SECONDS WEST A DISTANCE OF 264.15 FEET TO THE POINT OF BEGINNING, TOGETHER WITH AN EASEMENT FOR INGRESS, EGRESS AND PUBLIC UTILITIES OVER THE WEST 33 FEET THEREOF, AND ALSO AN EASEMENT FOR INGRESS, EGRESS AND PUBLIC UTILITIES OVER THE SOUTH 10 FEET THEREOF.

LOT 3: COMMENCING AT THE SOUTHWEST CORNER OF SECTION 25, TOWNSHIP 1 NORTH, RANGE 6 WEST OF THE GILA AND SALT RIVER BASE AND MERIDIAN, MARICOPA COUNTY, ARIZONA, SAID CORNER BEING MARKED WITH A MARICOPA COUNTY ALUMINUM CAP, FROM WHICH, THE WEST QUARTER CORNER OF SAID SECTION 25 BEING MARKED WITH A 1 INCH DIAMETER IRON BAR BEARS NORTH 0 DEGREES 35 MINUTES 38 SECONDS EAST A DISTANCE OF 1319.28 FEET, THENCE NORTH 0 DEGREES 35 MINUTES 38 SECONDS EAST ALONG SAID LINE A DISTANCE OF 329.82 FEET, THENCE SOUTH 89 DEGREES 20 MINUTES 23 SECONDS EAST A DISTANCE OF 264.15 FEET TO THE POINT OF BEGINNING, THENCE CONTINUING SOUTH 89 DEGREES 20 MINUTES 23 SECONDS EAST A DISTANCE OF 301.78 FEET, THENCE SOUTH 24 DEGREES 54 MINUTES 52 SECONDS WEST A DISTANCE OF 180.98 FEET THENCE NORTH 89 DEGREES 19 MINUTES 44 SECONDS WEST A DISTANCE OF 227.24 FEET, THENCE NORTH 0 DEGREES 35 MINUTES 38 SECONDS EAST A DISTANCE OF 164.96 FEET TO THE POINT OF BEGINNING, TOGETHER WITH AN EASEMENT FOR INGRESS, EGRESS AND PUBLIC UTILITIES OVER THE SOUTH 10 FEET THEREOF, AND ALSO AN EASEMENT FOR A WELLSITE OVER THE NORTH 20 FEET OF THE SOUTH 30 FEET OF THE WEST 20 FEET THEREOF.

LOT 4: COMMENCING AT THE SOUTHWEST CORNER OF SECTION 25, TOWNSHIP 1 NORTH, RANGE 6 WEST OF THE GILA AND SALT RIVER BASE AND MERIDIAN, MARICOPA COUNTY, ARIZONA, SAID CORNER BEING MARKED WITH A MARICOPA COUNTY ALUMINUM CAP, FROM WHICH, THE WEST QUARTER CORNER OF SAID SECTION 25 BEING MARKED WITH A 1 INCH DIAMETER IRON BAR BEARS NORTH 0 DEGREES 35 MINUTES 38 SECONDS EAST A DISTANCE OF 1319.28 FEET, THENCE NORTH 0 DEGREES 35 MINUTES 38 SECONDS EAST ALONG SAID LINE A DISTANCE OF 164.91 FEET, THENCE SOUTH 89 DEGREES 19 MINUTES 44 SECONDS EAST A DISTANCE OF 264.15 FEET TO THE POINT OF BEGINNING, THENCE CONTINUING SOUTH 89 DEGREES 19 MINUTES 44 SECONDS EAST A DISTANCE OF 227.24 FEET, THENCE SOUTH 23 DEGREES 38 MINUTES 58 SECONDS EAST A DISTANCE OF 181.09 FEET TO A POINT ON THE SOUTH LINE OF THE SOUTHWEST QUARTER OF SAID SECTION 25, THENCE NORTH 89 DEGREES 19 MINUTES 5 SECONDS WEST ALONG SAID SOUTH SECTION LINE A DISTANCE OF 301.60 FEET, THENCE NORTH 0 DEGREES 35 MINUTES 38 SECONDS EAST A DISTANCE OF 164.96 FEET TO THE POINT OF BEGINNING, TOGETHER WITH AN EASEMENT FOR INGRESS, EGRESS AND PUBLIC UTILITIES OVER THE SOUTH 33 FEET AND ALSO OVER THE NORTH 10 FEET THEREOF.

LOT 5: COMMENCING AT THE SOUTHWEST CORNER OF SECTION 25, TOWNSHIP 1 NORTH, RANGE 6 WEST OF THE GILA AND SALT RIVER BASE AND MERIDIAN, MARICOPA COUNTY, ARIZONA, SAID CORNER BEING MARKED WITH A MARICOPA COUNTY ALUMINUM CAP, FROM WHICH, THE WEST QUARTER CORNER OF SAID SECTION 25 BEING MARKED WITH A 1 INCH DIAMETER IRON BAR BEARS NORTH 0 DEGREES 35 MINUTES 38 SECONDS EAST A DISTANCE OF 1319.28 FEET, THENCE NORTH 0 DEGREES 35 MINUTES 38 SECONDS EAST ALONG SAID LINE A DISTANCE OF 164.91 FEET, THENCE SOUTH 89 DEGREES 19 MINUTES 44 SECONDS EAST A DISTANCE OF 491.39 FEET TO THE POINT OF BEGINNING, THENCE SOUTH 23 DEGREES 38 MINUTES 58 SECONDS EAST A DISTANCE OF 181.09 FEET TO A POINT ON THE SOUTH LINE OF THE SOUTHWEST QUARTER OF SAID SECTION 25, THENCE SOUTH 89 DEGREES 19 MINUTES 5 SECONDS EAST ALONG SAID SOUTH SECTION LINE A DISTANCE OF 94.92 FEET, THENCE NORTH 0 DEGREES 34 MINUTES 17 SECONDS EAST A DISTANCE OF 330.07 FEET, THENCE NORTH 89 DEGREES 20 MINUTES 23 SECONDS WEST A DISTANCE OF 94.61 FEET, THENCE SOUTH 24 DEGREES 54 MINUTES 52 SECONDS WEST A DISTANCE OF 180.98 FEET TO THE POINT OF BEGINNING, TOGETHER WITH AN EASEMENT FOR INGRESS, EGRESS AND PUBLIC UTILITIES OVER THE SOUTH 33 FEET THEREOF.

BASIS OF BEARING:

N0°35'38"E ALONG THE WEST LINE OF THE THE SOUTHWEST QUARTER OF SECTION 25, T1N, R6W, MEASURED BETWEEN MONUMENTS NUMBERED 1 AND 2 SHOWN HEREON.

MONUMENT NOTES:

ALL MONUMENTATION SHOWN HEREON WERE ACCEPTED UNLESS OTHERWISE NOTED

- 1 FOUND MARICOPA COUNTY ALUMINUM CAP, SOUTHWEST CORNER OF SECTION 25.
- 2 FOUND 1" IRON BAR, WEST QUARTER CORNER OF SECTION 25.
- 3 FOUND 1/2" INSIDE DIAMETER IRON PIPE, CENTER OF SECTION 25.
- 4 FOUND CAR AXLE SET VERTICALLY IN THE GROUND, FOR THE SOUTH QUARTER CORNER OF SECTION 25.
- 5 SET 1/2" REBAR WITH CAP RLS 38863, ALSO FOUND 1/2" REBAR 1.06' SOUTH, NOT ACCEPTED.
- 6 FOUND 1/2" REBAR, ADDED CAP RLS 38863

RECORD OWNER:

APN 506-42-006G
N N HOUSING DEVELOPMENT, LLC
5305 W. ANGELA DRIVE
GLENDALE, ARIZONA 85308

REFERENCE DATA:

THIS SURVEY IS SUPPORTED BY THE FOLLOWING RECORD INFORMATION:

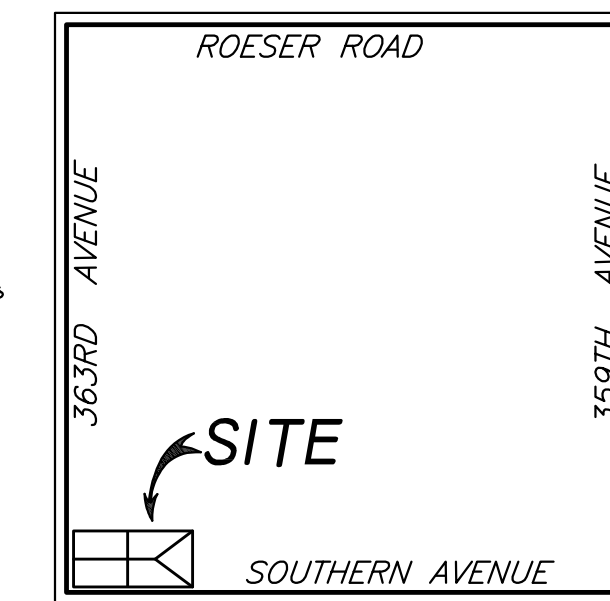
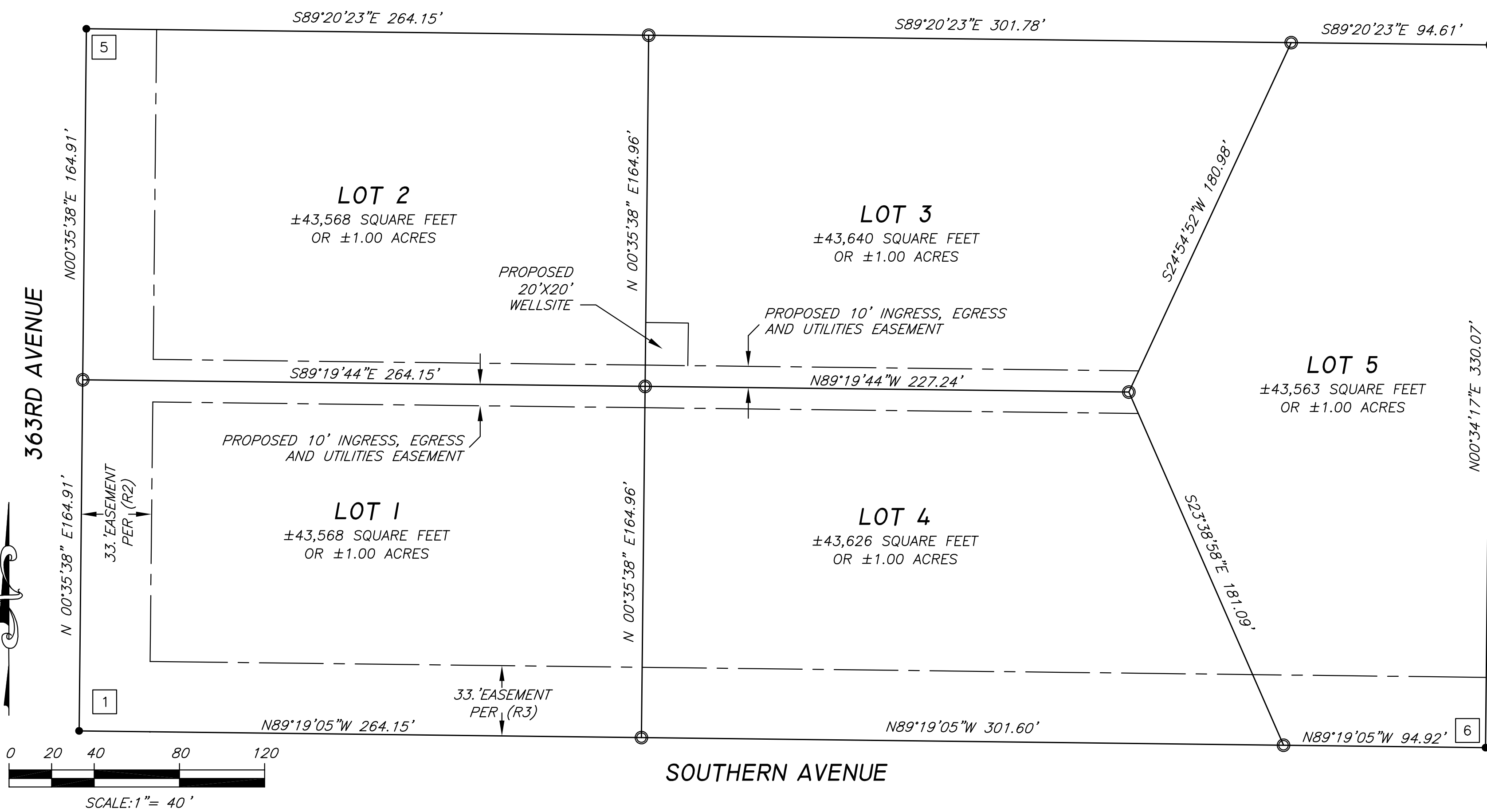
- (R1) RESULTS OF SURVEY AND LAND SPLIT, BOOK 804, PAGE 11, M.C.R.
- (R2) EASEMENT PER DOC. NO. 2006-1528560, M.C.R.
- (R3) EASEMENT PER DOC. NO. 2005-0848948, M.C.R.
- (R4) WARRANTY DEED NO. 2020-0466382, M.C.R.

SURVEYOR'S STATEMENT:

I, JOEL A. EMERT, BEING A LICENSED LAND SURVEYOR IN THE STATE OF ARIZONA HEREBY STATE THAT THIS MAP OR PLAT AND THE SURVEY ON WHICH IT WAS BASED WAS MADE UNDER MY SUPERVISION AND IT IS CORRECT TO THE BEST OF MY KNOWLEDGE AND THAT THE MONUMENTS SHOWN HEREON DO EXIST AS INDICATED.

SURVEYOR'S NOTES:

1. TITLE REPORT DATED 8-1-2016 PROVIDED TO SURVEYOR FROM CLIENT
2. ALL DISTANCES SHOWN HEREON ARE FROM FIELD MEASUREMENTS UNLESS OTHERWISE NOTED.



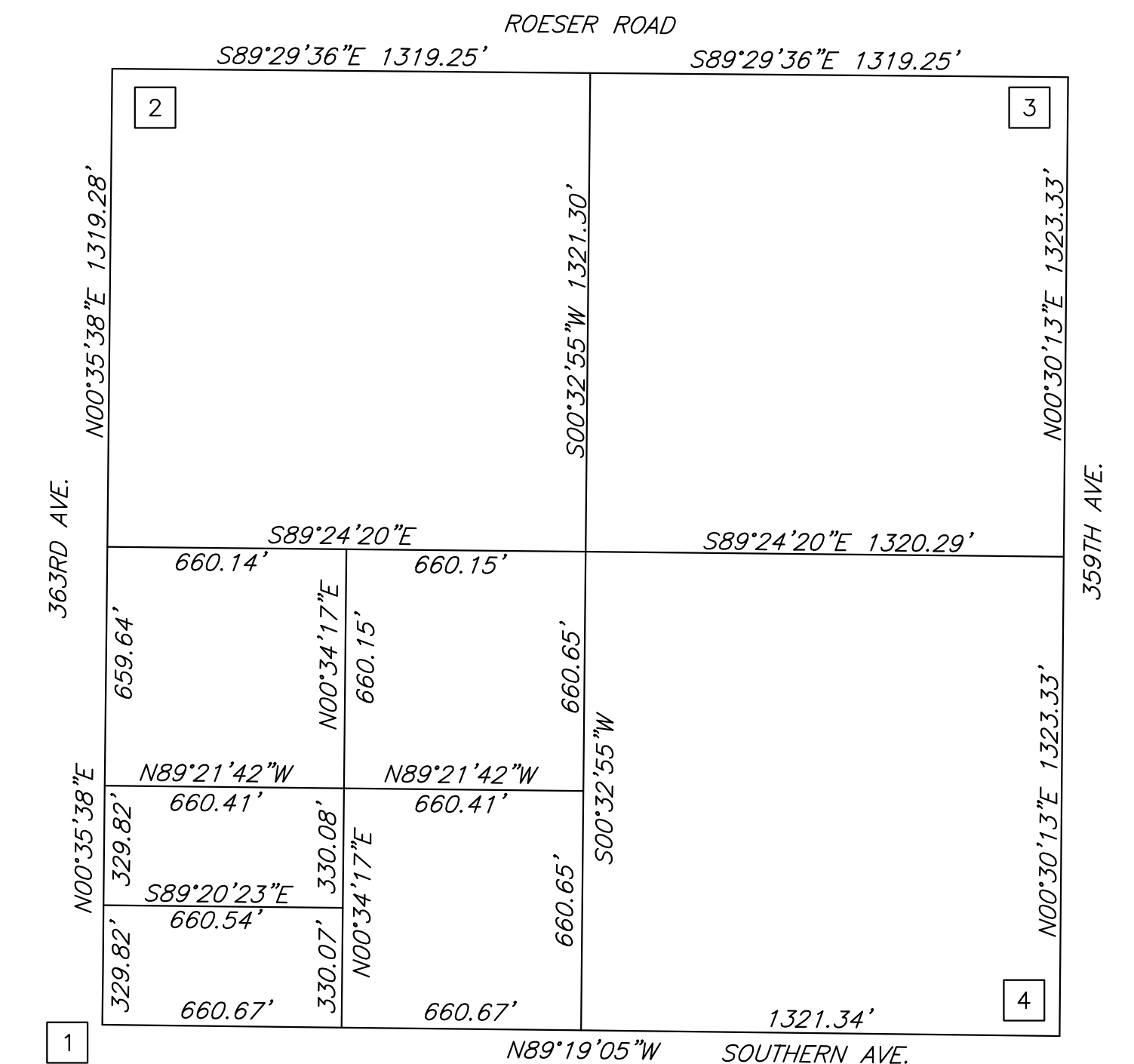
VICINITY MAP

NOT TO SCALE

LEGEND:

- BOUNDARY LINE
- MONUMENT LINE
- - - EASEMENT LINE
- SET 1/2" REBAR RLS #38863 UNLESS OTHERWISE NOTED
- FOUND MONUMENT AS NOTED
- (M) MEASURED DATA
- (R) RECORDED DATA
- MCR MARICOPA COUNTY RECORDS
- R/W RIGHT-OF-WAY
- APN ASSESSOR'S PARCEL NUMBER
- # MONUMENT NOTE

SOUTHWEST QUARTER SECTION 25, T1N, R6W.



QUARTER SECTION BREAKDOWN NOT TO SCALE

| | | |
|--|---------------------|-----------------|
| <p>EMERT LAND SURVEYING, LLC TEL (602)717-9216</p> | | SHEET NO. |
| | | 1 OF 1 |
| EXPIRES 3-31-2024 | | JOB # 20031 |
| DRAWN BY: J.A.E. | CHECKED BY: M.E. | DATE: 8-7-20 |